



# IER 567

Miniature ATB PRINTER

## The smallest and most powerful ATB printer

**Smallest ATB printer available**

**Fast, integrated IP connectivity**

**Very high speed printing in direct thermal and thermal transfer**

**1D and 2D barcode printing capability**

**Simple to setup, install and maintain**

**Unique escrow device version available for self-service kiosks**

**AEA 2001 SSD multi-context switching software for CUSS kiosks**

The IER 567 sets a new standard for performance, small size and ease of use. The IER 567 takes all the performance of the IER 557 - the industry's most successful ATB printer - adds additional features, and packs it all into a smaller housing that has 45% less volume, and 30% less parts.

With its integrated IP and USB connectivity, remote setup and monitoring capabilities, high speed printing, 1D and 2D barcode printing, extended memory capacity, multi-context software, Direct Thermal and Thermal Transfer versions; the IER 567 is the ideal solution for all your printing needs such as check-in, ticketing and self-service kiosks.

The advanced design approach to the IER 567 shows as well that sophisticated ATB printers can also be simple and easy to use. Based on IER's unique modular design concepts, there are no time consuming and critical adjustments to make as component positioning is set automatically. Whether setup is done through its easy-to-use navigation keys or using its remote web page ; the installation, usage and maintainability of the IER 567 is fast, simple and reliable.



The IER 567 is 45% smaller than the IER 557.

## Simple to install

With its choice of interfaces - Ethernet, USB or RS232 - the IER 567 is very simple to connect to your existing or future platforms.

The IER's compact size brings dramatic space savings either in Thermal Transfer or Direct Thermal versions.

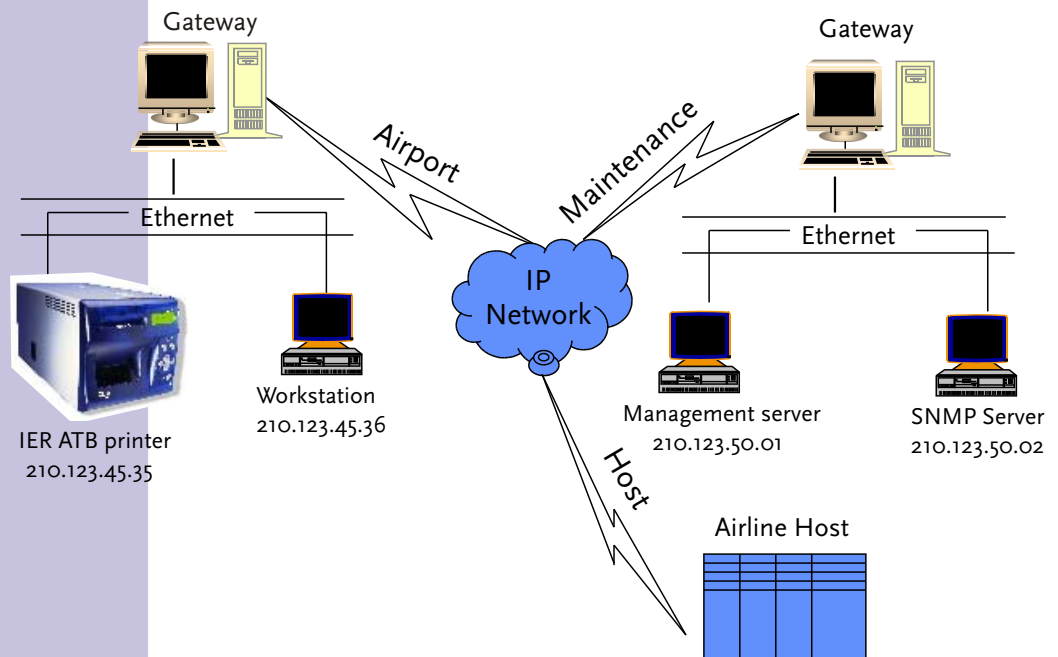
Its low weight makes the IER 567 simple to carry and install, and ideal for every check-in counter integration.

Setup is a breeze either through the local menu with its 4 line display and its 7 navigation keys or through a TCP/IP connected remote web browser, for example.

## Network connectivity

The IER 567 is an intelligent printer equipped with integrated, high speed 10/100 BaseT Ethernet connectivity. The ability to communicate using TCP/IP allows the printing from any remote location and the configuration of the printer from any standard web browser. New software revisions can be quickly downloaded to the printer via the network, reducing the need for on-site visits.

The network enabled IER 567 also provides remote monitoring capabilities to be used with a standard network management software. Diagnostic and statistical information are available to a Service Center through an SNMP protocol to allow preventive maintenance to be done in a remote, predictive way reducing the failure rate, improving the efficiency of on-site visits and lowering the total cost of ownership.



The IER 567 dimensions remain the same for both direct thermal and thermal transfer versions (shown).

## Simple to use

The IER 567 can operate with or without magnetic encoding, to meet your exact printing needs.

It provides your organization, and your customers, with a high quality output, for the printing of both texts and graphics. As such, the IER 567 has the ability to print barcoded boarding passes.

ATB coupon handling, either at the rear input feed or the front output is ergonomic and simple for the user.

The high speed of operation of this new printer provides outstanding performance to your business.

The ribbon cartridge has a blocking system which prevents the printer from functioning if the ribbon is not inserted properly. This feature provides greater reliability and there is less chance of ribbon breakage due to incorrect installation.



*A 4 line display and 7 key navigator make local configuration simple when needed.*

## Simple to maintain

The IER 567 has a modular design, to permit an easy maintenance and optimize total cost of ownership. Its 30% parts reduction provides you with great reliability, and is easy to service.

For improved performance and easy access, the printer was specially designed with straight paper path at critical areas.

The straight paper path is made of metal, for a better endurance and to avoid wear and plastic debris from creating problems.

The print-head can be changed without tools, with automatic adjustment, for an easier and more reliable maintenance.

Also, there is a single mag-head, which is easy to change. This allows a reduced cost of ownership, and a quicker maintenance.



*Easy to load 3 feed paper stock.*



*All parts of the IER 567 are easily accessible.*

## IER 567 trolleys

Two kinds of trolleys can be used with the IER 567: non-secured or secured.

The standard non-secured trolley supports two stocks of coupons. As an option, it is expandable to include a third stock.

The secured trolley has a lockable drawer supporting three stocks. Optional sensors can be added to detect when the drawer remains opened or to detect paper "stock low" condition.



*Three stock standard trolley.*



*Three stock secured trolley.*

Both trolleys have the following characteristics:

- printer mounted on the top of the trolley, stocks on the bottom,
- simple attachment of the printer on trolley without tools,
- fixed wheels in the back, swivelling in the front.

## Integratable IER 567

The integratable IER 567 is specially designed to ease kiosk integration and provide ultimate user interface, in the most reliable way.

The secure front feeder which permits a smooth ticket introduction into the printer is combined with an output module which groups documents for end user presentation. Therefore, before being presented to the passenger, the printed documents are put together into a stacker and presented as a group, like bank notes at a cash dispenser. If the user does not take the printed documents after they are presented for a pre-set time limit, they are taken back and stored within the escrow bin.

For additional space savings, both void bin and escrow bin (coupons not taken by passenger) are positioned underneath the IER 567 printer.

The integratable IER 567 is made with a flat face including the input cone and the output module to facilitate easy kiosk integration.

The implementation of the integratable IER 567 is made simply by fast fixing on a tray in the kiosk. Power and communication connections (serial, USB, network) are available at the back of the printer.

A handheld interface module, made for maintenance, can be installed in the kiosk with a Velcro strip.

With its AEA 2001 SSD software, which permits multi-context and switching of PECTABS, the integratable IER 567 provides you with the ultimate solution for CUSS kiosks.



*Multiple coupons are presented to passengers in an ergonomic way.*



*The integratable version of the IER 567 printer.*

## TECHNICAL SPECIFICATIONS

### IER 567 printer

#### Compliance

- Meets IATA Resolutions 722c, 722d, 722e
- AEA 99, 2001, 2001 SSD compatible

#### Print technology

- Field-selectable Direct Thermal or Thermal Transfer
- Single pass: 1,200 coupons
- Multi-pass: 7 passes (automatic rewind), up to 8,000 coupons
- Ribbon low and ribbon out detection

#### Magnetic encoding/decoding

- 4 tracks, 210 dpi
- Stock Control Number (SCN) pre-read

#### Electronics

- Risc processor 32 bits
- Memory: Flash PROM 4 MB, SRAM 512 kB
- Options: Flash PROM extension +4 MB or +8 MB, SRAM extension +2 MB

#### Paper handling

- 3 continuous fanfold stocks
- ATB coupons/wallets: 7" 3/8 and 8"
- Front insertion mode: ATB coupons or wallets
- Magnetic encoding/decoding speed: 24"/sec (600 mm/sec)
- Output stacker (up to 65 documents)
- Internal reject box (up to 16 documents)

#### Interface

- Serial, asynchronous RS232
- Transmission rate: up to 57,600 bauds

#### Options

- Ethernet (10/100) base T
- USB
- Additional RS232 port

#### Network features

- 10/100 Mbits/s Ethernet interface
- 100baseT/10baseT auto detection
- Multiple protocol support: TCP/IP, http/html, ftp, UDP
- DHCP support for automatic IP address assignment
- SNMP support with an appropriate MIB (Management Information Base).

### Printing features

- Resolution: 203 dpi (8 x 8 dots/mm) print head
- Print line width: 3 1/16" (80 mm)
- Print speed: up to 8"/sec (TT: up to 6"/sec)
- DT throughput: up to 40 ATB coupons/min
- Extended graphic capabilities: logos, templates, fonts, barcodes as per AEA 99

### Control panel

- 4 x 20 character backlit LED display
- 7 keys, including 4 navigation keys

### Power supply

- AC power: auto-ranging 100-120/200-240, VAC, 50/60Hz +/- 2%

### Environmental

- Operating temperature: +5°C to +40°C (+41°F to +104°F)
- Storage temperature: -20°C to +70°C (-4°F to +158°F), ribbon excluded
- Operating humidity: 20% to 80% (non-condensing)

### Dimensions

- H x W x D: 200 x 200 x 437 mm (7,9" x 7,9" x 17,2"), footprint: 200 x 200 x 400 mm (7,9" x 7,9" x 15,7")
- 15 mm (0,6") shall be left free on the right side of the printer, for ventilation
- Mass: Thermal Transfer < 11 kg (24,2 lbs) with cartridge, Direct Thermal < 10 kg (22 lbs)

### Agency approvals

- CE, FCC, UL and CSA

## Integratable version Characteristics

### Paper handling

- Grouped presentation of coupons: up to 15 ATB documents
- 100 coupons reject box
- 100 coupons escrow box

### Options

- LEDs on the front face for ATB document input and output
- External control panel with 4 x 20 character backlit display and 7 keys for maintenance

### Dimensions

- H x W x D: 260 x 225 x 493 mm (10,2" x 8,9" x 19,4")
- Mass: Thermal Transfer < 13 kg (28,7 lbs) - with cartridge, Direct Thermal < 12 kg (26,4 lbs)

## Trolleys

### Dimensions:

- Non-secured trolley
  - H x W x D (with printer): 650 x 200 x 726 mm (25,6" x 7,9" x 28,6") with the 3<sup>rd</sup> stock, 500 mm (19,7") in the 2 stocks configuration
  - Mass (without printer) < 15 kg (33 lbs)
- Secured trolley
  - H x W x D (with printer): 650 x 200 x 700 mm (25,6" x 7,9" x 27,6")
  - Mass (without printer) < 29 kg (63,9 lbs)

**IER SA / France**  
Headquarters  
Tel.: +33 1 41 38 60 00  
Fax: +33 1 41 38 62 75

**IER Ltd London / UK**  
Tel.: +44 208 744 7650  
Fax: +44 208 744 7670

**IER Madrid / Spain**  
Tel.: +34 91 535 89 75  
Fax: +34 91 535 89 76

**IER GmbH Hanover / Germany**  
Tel.: +49 5173 6906 30  
Fax: +49 5173 6906 50

**IER Singapore**  
Tel.: +65 6276 6966  
Fax: +65 6271 5563

**IER Tokyo / Japan**  
Tel.: +81 3 5730 9001  
Fax: +81 3 5730 9002

**IER Shanghai / P.R. of China**  
Tel.: +86 21 6473 6792  
Fax: +86 21 6473 6806

**IER Inc. Dallas / USA**  
Tel.: +1 972 991 2292  
Fax: +1 972 991 1044

**IER Inc. Belton / USA**  
Tel.: +1 254 933 5000  
Fax: +1 254 933 5050

**IER Dubai / UAE**  
Tel.: +971 4 347 67 20  
Fax: +971 4 347 67 03

[www.ier.fr](http://www.ier.fr)

IER is a registered trademark of IER, SA.  
Public limited company having a capital of:  
Euros 12,560,030  
R.C.S.: Nanterre B 622 050 318